

intabo s.r.o.
ZEMĚDĚLSKÉ TECHNOLOGIE

**Mobilní
sušky
obilovin**

MECMAR

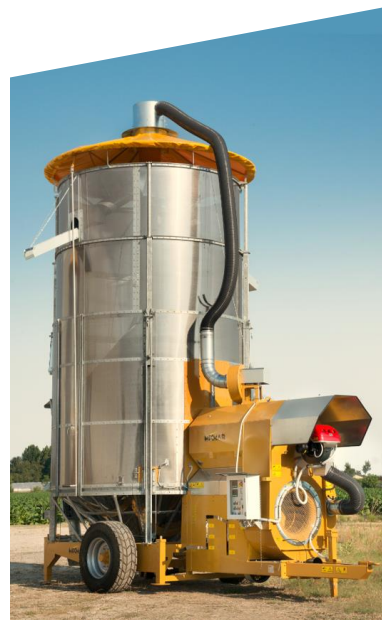
Typy sušek



CPT 7
COMPACT



FSN 15
THE TYPICAL



SSI 28
THE STRONG ONE



SF55
THE BIG ONE

Šaržová suška

Loading behind, discharging on top

Different fuel alternatives

PTO or electrical power

Galvanized steel frame

Stainless steel screens

Mobile or stationary

Homogeneous drying

Long lasting

Easy to use

Flexibile



MECMAR

intabo s.r.o.
ZEMĚDĚLSKÉ TECHNOLOGIE

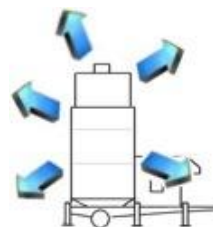
Princip práce



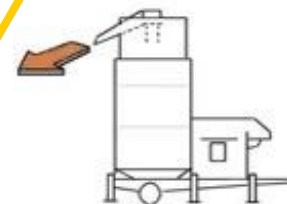
1
Plnění



2
Sušení



3
Chlazení



4
Výstup

TRANSPORT



WORK



MECMAR

intabo s.r.o.
ZEMĚDĚLSKÉ TECHNOLOGIE

Pohon

Traktor PTO

PTO & 1 elmotor

Elmotor



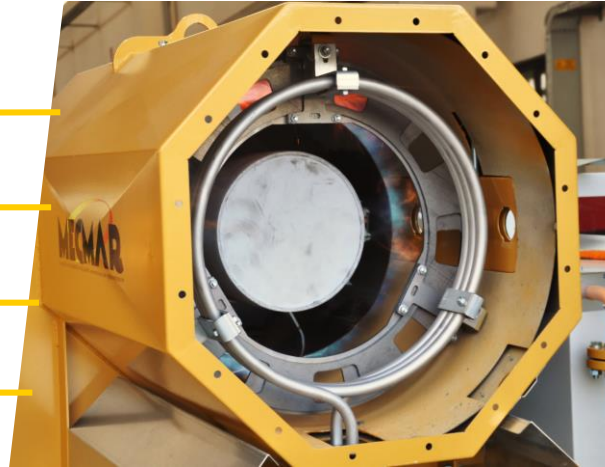
Typ hořáku

Diesel

Zemní plyn

LPG v tekutém stavu

Biomass



Ohřev - systémy

Přímý



Přes výměník



NEW MODEL NANO

Compact

2m x 4.5m x 4.8m

7.5 – 9m³

Diesel/Gas

Fully galvanised chassis

Heat exchanger option

El. Power option 11-15kW



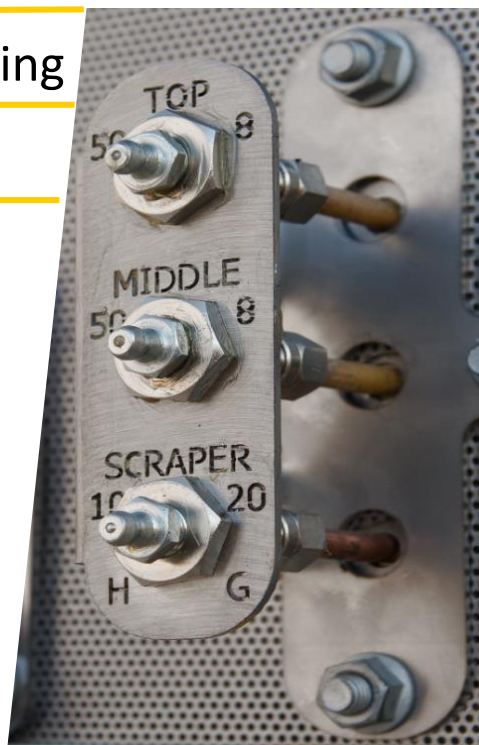
S péčí pro detail

Centralized greasing

Flat screws with strong coating

Stainless steel screens

Hot galvanized chassis



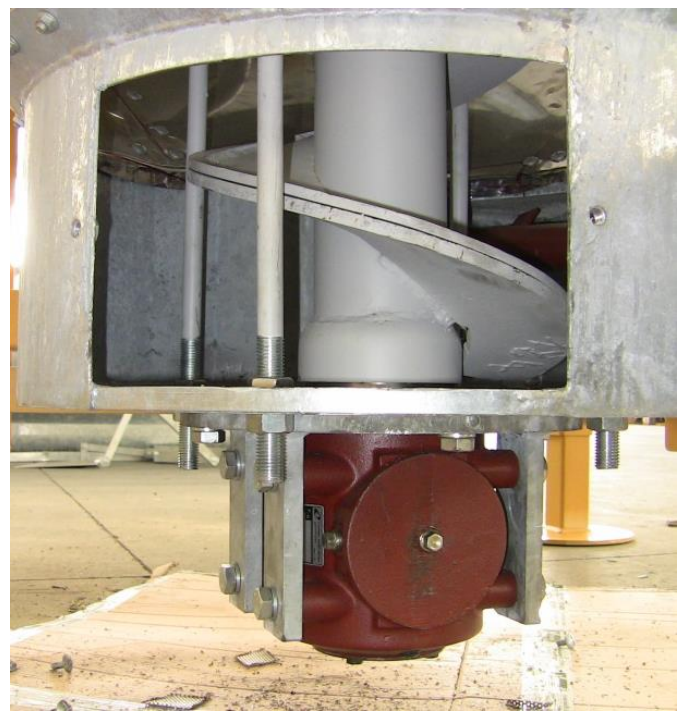
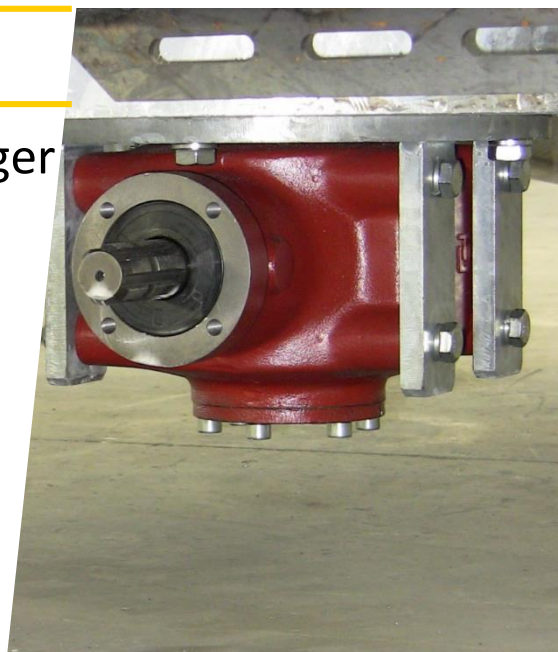
S péčí pro detail

Optimized furnace length

Large diameter gear

Variable pitch spiral

External gearbox for the auger



Ventilátor před hořákem

Cold air has high density

Smaller fan is required

Lower consumptions

Fan before the burner



Příklad – CPT10

Zásobník (kukuřice) 10 ton

Výstup(kukuřice z 25% na 14%) 55ton/24h

% vlhkost (kukuřice) 4.5% za hod. při 110°C

Plnění 15min

Chlazení 30 – 60 min

Hořák 500 000kCal/h

Potřebný výkon traktor PTO: 35hp/540 540 ot.

Elektromotor: 22kW 3 f



EXAMPLE 2 – SSI28

Capacity (maize corn) 28 ton

Output (maize corn from 25% to 14%) 161ton/24h

% moisture (maize corn) 4.5% per hr @110°C

Loading time ca. 25min

Cooling time 30 – 60 min

Burner output 1 000 000kCal/h

Power requirement PTO: 100hp/540rpm

Electrical power: 55kW 3 phase



EXAMPLE 3 – SF55

Capacity (maize corn) 55 ton

Output (maize corn from 25% to 14%) 291ton/24h

% moisture (maize corn) 4.5% per hr @110°C

Loading time ca. 40 min

Cooling time ca. 60 min

Burner output 2 300 000kCal/h

Power requirement PTO: 150hp/540rpm

Electrical power: 100kW 3 phase

